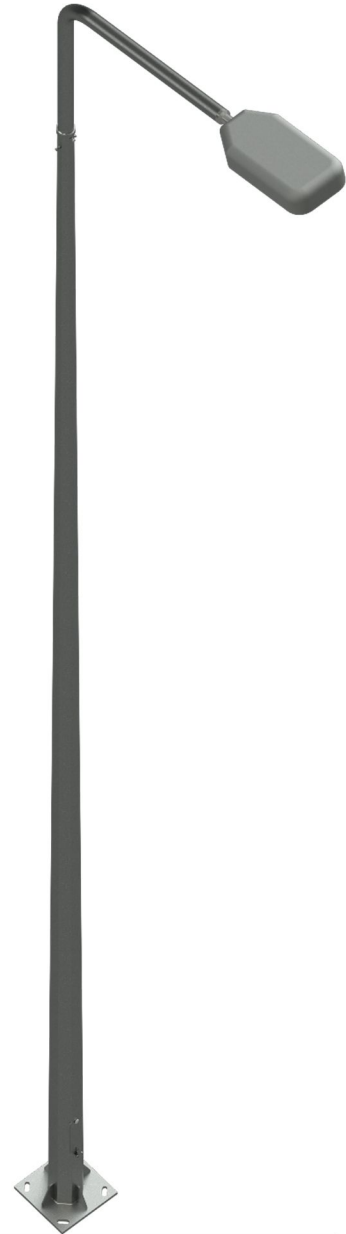
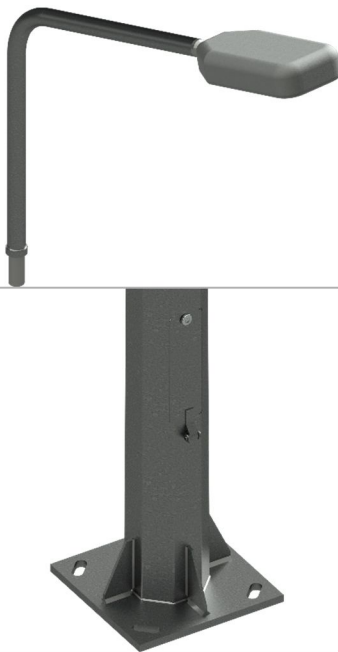




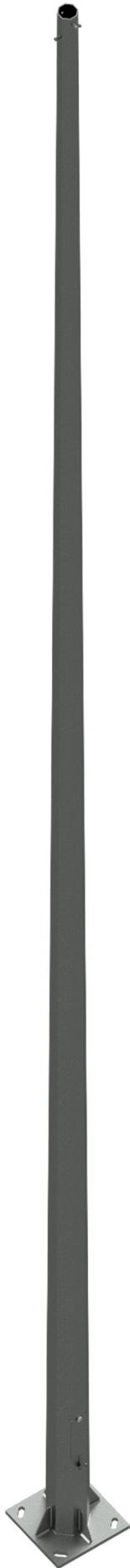
# Octagonal Light Poles



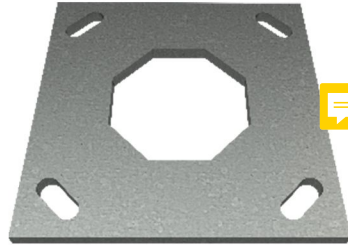
Gulta octagonal poles designs based on GECOL specifications- No.GES 10510 (Lighting Column).

Specific information and details may be subject to change without notice and it can be adjusted to customer needs.

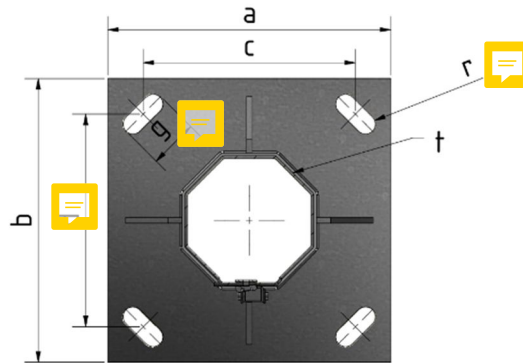
Contact Sales Team for custom sizes and applications



Steel grade: S235  
Protection: Hot Dip Galvanizing



Specifications




Height H (m)	Code	D-Bottom (mm)	D-Top (mm)	t (mm)	a x b x t (mm)	c x f (mm)	Bolt Size
6	21004	152	60	3	400x400x10	300x300	M24
7	21002	152					
8	21005	152					
9	21006	152					
10	21007	152					
12	21028	170					




## Octagonal Light Poles




**Double Arm 2 m**  
**Code:** 21025  
**Steel grade:** S235   
**Protection:** Hot Dip Galvanizing  
**Wall thickness:** 3mm



**Single Arm 2 m**  
**Code:** 21005  
**Steel grade:** S235   
**Protection:** Hot Dip Galvanizing  
**Wall thickness:** 3mm




**Double Arm 2 m**  
**Code:** 21024  
**Steel grade:** S235   
**Protection:** Hot Dip Galvanizing  
**Wall thickness:** 3mm



**Single Arm 2 m**  
**Code:** 21002  
**Steel grade:** S235   
**Protection:** Hot Dip Galvanizing  
**Wall thickness:** 3mm



**Double Arm 1.5 m**  
**Code:** 21023  
**Steel grade:** S235   
**Protection:** Hot Dip Galvanizing  
**Wall thickness:** 3mm



**Single Arm 1.5 m**  
**Code:** 21003  
**Steel grade:** S235   
**Protection:** Hot Dip Galvanizing  
**Wall thickness:** 3mm