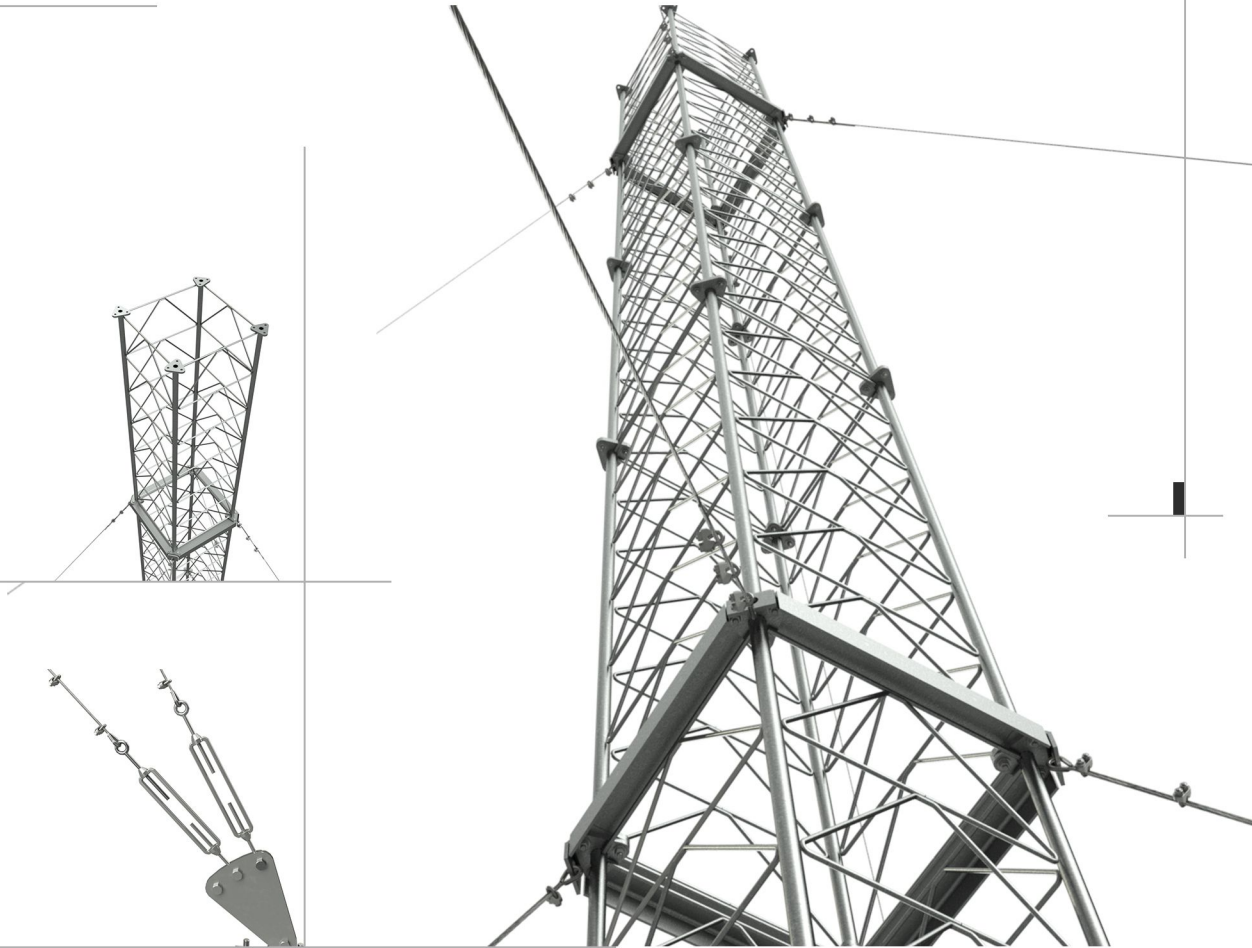
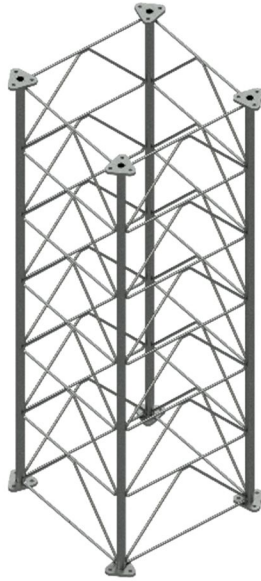




S-600 GUYED MAST TOWER



Gulta Company produced the sections of this type using **K-System**, the sections of the tower were designed for low duty weights of telecommunications equipment. Wind speed 45 m/s with load capacity 2 m². In this file we provide just the components of this type.

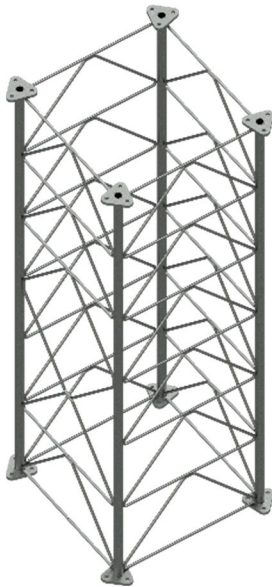


**S-600 Section
Code 22016**

Size: 600x600- h2000 mm

Grade of steel: S275 or S235

Coating: Hot dip galvanizing according to ISO 1461



**S-600 Section With Manhole
Code 22016-1**

Size: 600x600- h2000 mm

Grade of steel: S275 or S235

Coating: Hot dip galvanizing according to ISO 1461



H-Frame Mast Base 600

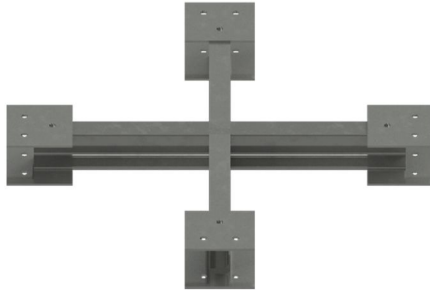
Code 28149

Size: 995x1615 mm

Grade of steel: S275 or S235

Coating: Hot dip galvanizing according to ISO 1461

First option of foundation: This type of base placed over the concrete foundation



X-Frame Mast Base 600

Code 28059

Size: 600x600 mm

Grade of steel: S275 or S235

Coating: N/A

Second option of mas base: This type of base plant inside the concrete foundation



Guy Attachment S-600

Code 22027

Size: 600x600 mm

Grade of steel: S275 or S235

Coating: Hot dip galvanizing according to ISO 1461



Guy Anchor

Code 28049

Size: 180x260x110 mm

Grade of steel: S275 or S235

Coating: Hot dip galvanizing according to ISO 1461



Connection Plate
Code 28045
Size: 364x204 mm
Grade of steel: S275 or S235
Coating: Hot dip galvanizing according to ISO 1461



Turnbuckle
Code 9910100



Wire Rope Thimble
Code 991289



Guy Wire
Code 9910288
Size: Ø10 mm



Bolt M20
Code: 9910117
Grade: 8.8
Surface treatment: HTG

Bolt M12
Code: 9910122
Grade: 8.8
Surface treatment: HTG



Steel Wire Clamp
Code 9910287