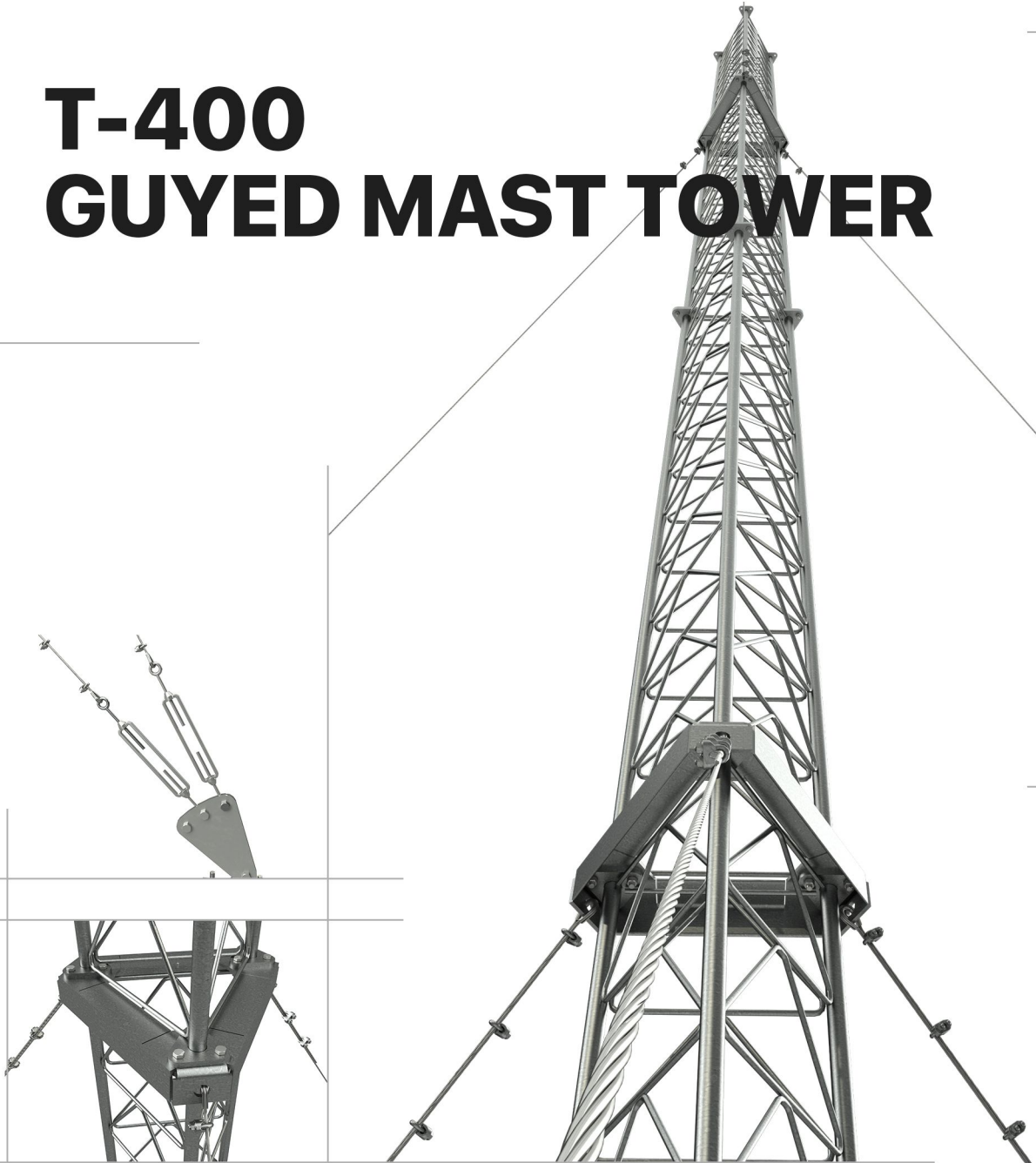
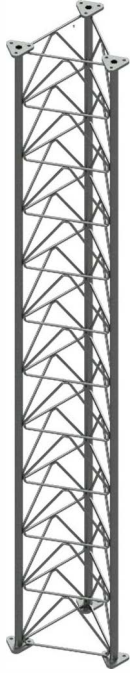




# T-400 GUYED MAST TOWER



Gulta Company produced the sections of this type using **K-System**, the sections of the tower were designed for low duty weights of telecommunications equipment. Wind speed 45 m/s with load capacity 2 m<sup>2</sup>. In this file we provide just the components of this type.

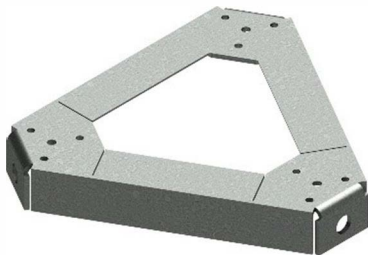


**T-400 Section**  
**Code 22016**

**Size:** Equilateral triangle 400- h 3000 mm

**Grade of steel:** S275 or S235

**Coating:** Hot dip galvanizing according to ISO 1461



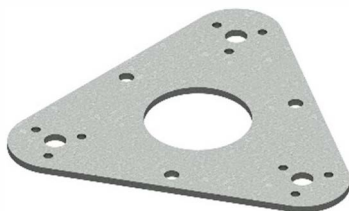
**Guy Attachment T-400**

**Code 22030**

**Size:** Equilateral triangle 400

**Grade of steel:** S275 or S235

**Coating:** Hot dip galvanizing according to ISO 1461



**Base Plate T-400**

**Code 28044**

**Size:** Equilateral triangle 400

**Grade of steel:** S275 or S235

**Coating:** Hot dip galvanizing according to ISO 1461



**Guy Anchor**  
**Code 28049**  
**Size:** 180x260x110 mm  
**Grade of steel:** S275 or S235  
**Coating:** Hot dip galvanizing according to ISO 1461



**Connection Plate**  
**Code 28045**  
**Size:** 364x204 mm  
**Grade of steel:** S275 or S235  
**Coating:** Hot dip galvanizing according to ISO 1461



**Bolt M20**  
**Code: 9910117**  
**Grade: 8.8**  
**Surface treatment: HTG**

**Bolt M12**  
**Code: 9910122**  
**Grade: 8.8**  
**Surface treatment: HTG**



Steel Wire Clamp  
Code 9910287



Turnbuckle  
Code 9910100



Wire Rope Thimble  
Code 991289



Guy Wire  
Code 9910288  
Size: Ø10 mm