



# Gulta Engineering Industries

## Company Profile

[engineering.gulta.ly](http://engineering.gulta.ly)

[info@gulta.ly](mailto:info@gulta.ly)

# Table of Contents

About Us	01
Vision, Mission and Values	03
Human Resources	04
Organizational chart	04
Design and Planning Departement	05
Project Management and Technical Affairs	06
Company Factories	07
Preparation Factory	08
Longitudinally Welded Pipe Factory	09
Industries Engineering Factory	10
Galvanizing Factory	11
Machines and Devices	12
Certificates	16

# About Us



Gulta Company established of 2011, it is one of the biggest local companies at the local level in the field of steel industries. the company located in the industrial zone in Misrata City with area 36673 square meter, 17000 square meters are is industrial and administrative buildings, warehouses and storages. The company provides a lot of products including Pipes, Steel plates, Steel strips and Lighting poles, transmission towers, Self-support lighting towers, telecommunication towers (Self-support, Guyed mast, monopole ec.t), Pre-Engineered Buildings and many types of steel structures with high quality of protection (Hot Dip Galvanizing). The company also supply services such as inspection, maintenance and installation of steel constrictions.



The company managing these resources using an integrated application system (**ERP system**) to manage its business, automate many office functions, services, human resources, all practical aspects such as product planning, development, manufacturing, sales and marketing in one database.

Which in turn contributed to getting the quality management system certificate (ISO 9001), health and safety (OH&S) management system certificate (ISO 45001) and environmental management system certificate (ISO 14001).

## Our Vision

To be the leader of industrial & civil industrials to developing future of Libya. To produce Libya industry technological and mechanical demand as Libyan products.

## Our Values

are based on our culture to achieve our goals, which are:

- Transparency and responsibility
- Creativity and quality
- Efficiency and effectiveness
- Cooperation and mutual respect
- Punctuality

## Our Mission

Developing designing high quality product as per required on local market , increase the numbers of certified products complying by National & International standards, Increase and diversify of our production capacity. We are committed to the fair relationship of our clients and maintain their satisfaction. We use resources efficiently and effectively while adhering to the legislations, conditions and the environment requirements of, safety and occupational health.



150

15

Technicians including welders and teams leaders.

Engineers

5

10

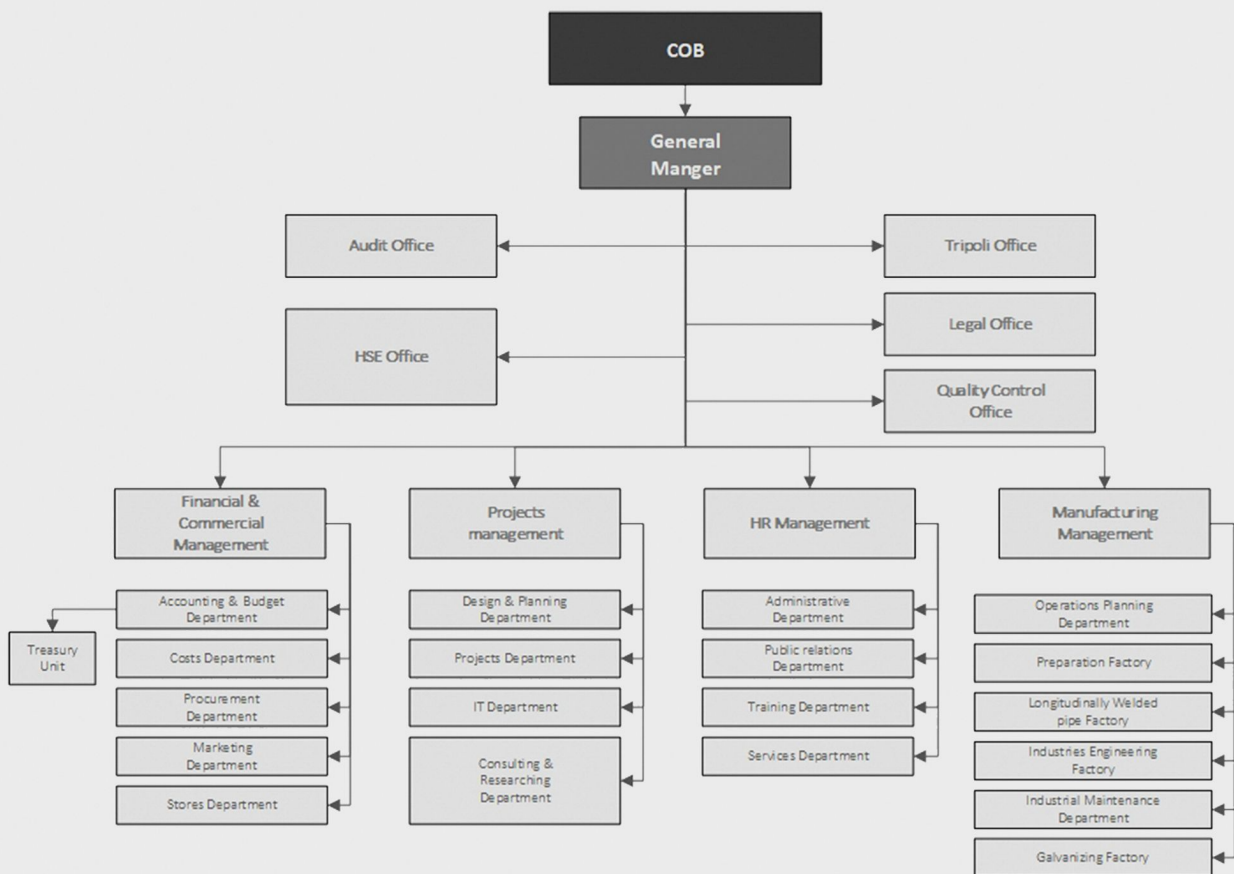
Security Guards

Operators

## Human Resources

The real Power of the GULTA Company Lie in the Human Resources from managerialists, Engineers, Technicians to the Casual workers who work with team spirit, this helped us to raise the company level to the highest levels of accuracy, reliability and efficiency.

## Organizational Chart





## Design & Planning Department

Gulta company use intelligent systems and approaches to maintain the development of its departments. As one of the most specialized Departments, the Design and Planning department is committed to analyze the costumers' requirements and provide them with distinction solutions, using sophisticated tools in engineering design.

- Autodesk Inventor
- Autodesk Robot Structural Analysis.
- Autodesk 3D Max.
- Autodesk Revit.
- Autodesk Advance Steel Software.
- AutoCAD.





# Project Management and Technical Affairs

GULTA Co. Projects management team consist of qualified staff as from Engineers to the Technicians in the field of steel Constructions.

GULTA Projects management completed many projects in different fields and sizes of steel constructions, such as Pre-Engineered Buildings (warehouses and industrial buildings), different types of telecommunication towers, security fences and other projects in steel structure fields.







## Company Factories

four factories with Integrated production lines and units working with High technology systems. The company conduct strict quality control during whole Industrial processes in these factories by teams of skilled and qualified engineers.



Local & internal standard are implemented to all steps of products & process in the company by QAC department. QAC department is independent from product line management and reported to general manager directly.



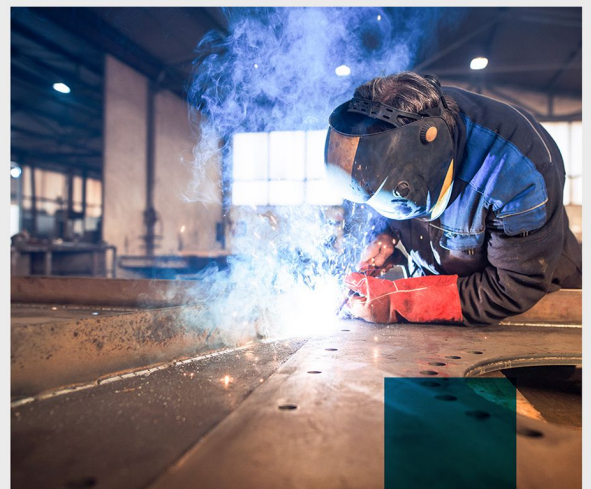
# Preparation Factory

Our preparation factory consists of two steel slitting production lines, cut to length production Line, two Plasma cutting unites and corrugated production line for roofing sheets.



# Longitudinally Welded Pipe Factory

Our pipe factory use Electric resistance welded (ERW) process by cold-forming a sheet of steel into a cylindrical shape to manufacture the pipes and tubes. This factory has four pipes production lines and one Hydro test line.





# Industries Engineering Factory

The Industries Engineering Factory consisting by four production lines which are:

1. Lighting Poles production line.
2. Telecommunications towers production line.
3. Security Fences production line.
4. Steel Structure production line.



# Galvanizing Factory



Our galvanizing factory is one of the biggest factories in Libya with size 12.5 \* 1.2 \* 2.0 meters, consist an air purification system from solid sediments and acids to preserve the environment at the highest levels. By following a certain set of rules, GULTA Company insure a high-quality Galvanizing process.



Description	Quantity
Cut to Length Line Machine	1
Corrugated line Machine for roofing steel sheets	1
Slitting line Machine	2
Steel Pipe Mill Machine	4
Hydro Test Machine for Steel Pipes	1
Galvanizing Line	1
Plasma Cutting Machine	2
Lathing Machine	2
Milling Machine	2
Automatic Pole Welding Machine	1
Radial Drilling Machine	2

# Machines and Devices



Description	Quantity
Pillar Drill Machine	1
Power Magnetic Steel Drill Press	3
Hydraulic Steelworker cutting Machine	2
Double Miter Semi-Automatic Double Column Hydraulic Bandsaw Machine CSM 550	1
CNC Bending Machine With Length 12 meter, Capacity 440 ton	1
NC Bending Machine With Length 3 meter, Capacity 80 ton	1
Hydraulic Press Machine 100 ton	1
Hydraulic Press Machine 20 ton	1
Cold Saw Steel Cutting Machine	3
Hot Saw Steel Cutting Machine	2

# Machines and Devices



# Machines and Devices

Description	Quantity
Trailer 30 Ton	1
Trailer 15 Ton	1
Forklift 15 Ton	1
Forklift 12 Ton	1
Forklift 10 Ton	1
Forklift 7 Ton	3
Forklift 5 Ton	1
Forklift 3 Ton	1
Telescopic Forklift	1
Electrode Welding Machine	20
MIG/MAG Welding Machine	6





# Machines and Devices

Description	Quantity
Punch Press Machine	1
Horizontal Cold Saw Machine	1
CNC Sharpening Machine	1
Painting Workshop (Electrostatic Painting Machine + Duse Pitting Equipment)	1
Wall Mounted Jib Crane 500 kg	2
Jib Crane 100 kg	2

Description	Quantity
Overhead Crane 2 Ton	2
Overhead Crane 3 Ton	6
Overhead Crane 5 Ton	3
Overhead Crane 6 Ton	2
Overhead Crane 15 Ton	1
Gantry Overhead Crane 10 ton	1
Gantry Overhead Crane 30 ton	1
Hydraulic Pipe Bending Machine	1



# Certificates

## ISO

9001 : 2015

IQM-Q-0245

**IQM**  
**Certificate**

**GULTA COMPANY FOR ENGINEERING INDUSTRIES**

INDUSTRIAL ZONE, HEAVY TRANSPORT ROAD 3.5 KM MISURATA - LIBYA

The IQM Certification approves that the above mentioned organization evaluates the Quality Management System and complies with the requirements of the relevant standard

**ISO 9001:2015**

Scope,  
PIPE, PROFILE, STEEL STRUCTURES, SCAFFOLDING, CONSTRUCTION FORMWORKS, PREFABRICATED BUILDINGS, CONTAINER, TELECOMMUNICATION TOWERS, ELECTRICITY TOWERS

Certificate No. : IQM-Q-0245  
Certificate Initial Issue Date : 21.04.2021  
Certificate Issue Date : 21.04.2021  
Certificate Expire Date : 20.04.2022

This certificate is valid for a period of three years from the date of initial publication if the IQM documentation rules are followed and the annual surveillance audits are completed successfully. The validity of the certificate will be made every year depends on surveillance control. The validity of the Certificate can be reviewed via [www.iqm.com.tr](http://www.iqm.com.tr)

**GENERAL MANAGER**

IQM International Certification Training and Surveillance Services Ltd. Co.  
Sımsıkçı Mah. 5445 Yolu No: 33, 02165/İstanbul  
Phone: 0216 574 94 77 Fax: 0216 574 79 28 info@iqm.com.tr www.iqm.com.tr

**IQM**  
**Certificate**

**GULTA COMPANY FOR ENGINEERING INDUSTRIES**

INDUSTRIAL ZONE, HEAVY TRANSPORT ROAD 3.5 KM MISURATA - LIBYA

The IQM Certification approves that the above mentioned organization evaluates the Occupational Health and Safety Management System and complies with the requirements of the relevant standard

**ISO 45001:2018**

Scope,  
PIPE, PROFILE, STEEL STRUCTURES, SCAFFOLDING, CONSTRUCTION FORMWORKS, PREFABRICATED BUILDINGS, CONTAINER, TELECOMMUNICATION TOWERS, ELECTRICITY TOWERS

Certificate No. : IQM-S-0245  
Certificate Initial Issue Date : 21.04.2021  
Certificate Issue Date : 21.04.2021  
Certificate Expire Date : 20.04.2022

This certificate is valid for a period of three years from the date of initial publication if the IQM documentation rules are followed and the annual surveillance audits are completed successfully. The validity of the certificate will be made every year depends on surveillance control. The validity of the Certificate can be reviewed via [www.iqm.com.tr](http://www.iqm.com.tr)

**GENERAL MANAGER**

IQM International Certification Training and Surveillance Services Ltd. Co.  
Sımsıkçı Mah. 5445 Yolu No: 33, 02165/İstanbul  
Phone: 0216 574 94 77 Fax: 0216 574 79 28 info@iqm.com.tr www.iqm.com.tr

## ISO

45001 : 2018

IQM-S-0245

**IQM**  
**Certificate**

**GULTA COMPANY FOR ENGINEERING INDUSTRIES**

INDUSTRIAL ZONE, HEAVY TRANSPORT ROAD 3.5 KM MISURATA - LIBYA

The IQM Certification approves that the above mentioned organization evaluates the Environment Management System and complies with the requirements of the relevant standard

**ISO 14001:2015**

Scope,  
PIPE, PROFILE, STEEL STRUCTURES, SCAFFOLDING, CONSTRUCTION FORMWORKS, PREFABRICATED BUILDINGS, CONTAINER, TELECOMMUNICATION TOWERS, ELECTRICITY TOWERS

Certificate No. : IQM-E-0245  
Certificate Initial Issue Date : 21.04.2021  
Certificate Issue Date : 21.04.2021  
Certificate Expire Date : 20.04.2022

This certificate is valid for a period of three years from the date of initial publication if the IQM documentation rules are followed and the annual surveillance audits are completed successfully. The validity of the certificate will be made every year depends on surveillance control. The validity of the Certificate can be reviewed via [www.iqm.com.tr](http://www.iqm.com.tr)

**GENERAL MANAGER**

IQM International Certification Training and Surveillance Services Ltd. Co.  
Sımsıkçı Mah. 5445 Yolu No: 33, 02165/İstanbul  
Phone: 0216 574 94 77 Fax: 0216 574 79 28 info@iqm.com.tr www.iqm.com.tr

## ISO

14001 : 2015

IQM-E-0245



15

Years of  
**Experience**



## Gulta Engineering Industries

### Libya

#### Misrata

Industrial Zone - 3 KM in the heavy transport road

#### Tripoli Branch

Airport Road -  
Residential neighborhood flowers -  
Building 12

P.o.B.: 29 - Misrata

Tel: 00218515212447 - 00218515201284

Mobile: 00218912123981

E-mail: [info@gulta.ly](mailto:info@gulta.ly)

#### Marketing Dept. :

00218912124037

00218913123946

E-mail: [sales@gulta.ly](mailto:sales@gulta.ly)



Scan me!

[engineering.gulta.ly](http://engineering.gulta.ly)